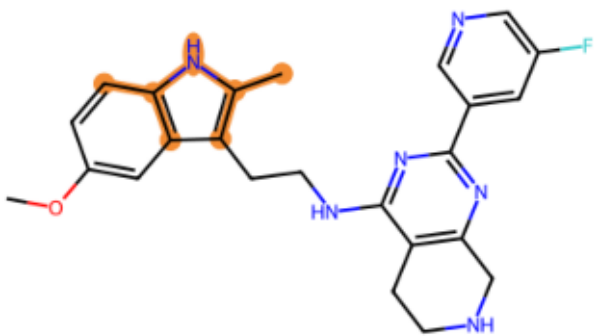
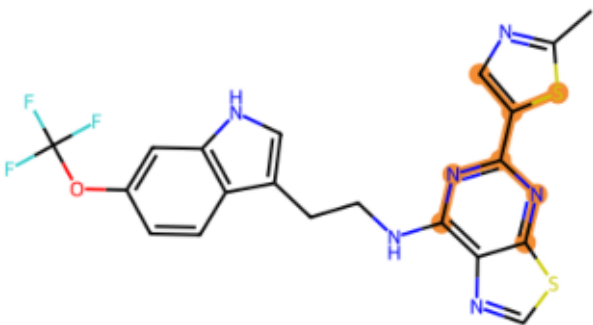


Only-active Morgan bits (highlighted Morgan bit environments)
Threshold $\geq 2\%$, Morgan radius=2, nBits=2048 — page 1/6

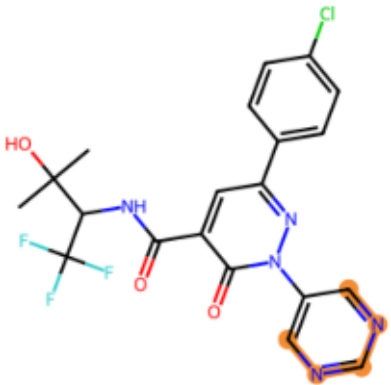


Morgan_126 | f1=0.026, f0=0.010

ex1

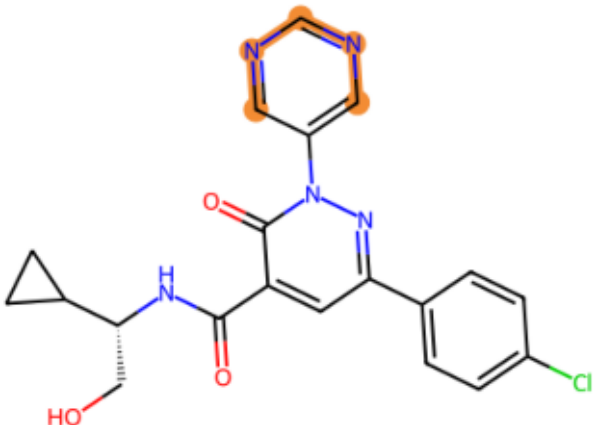


ex2

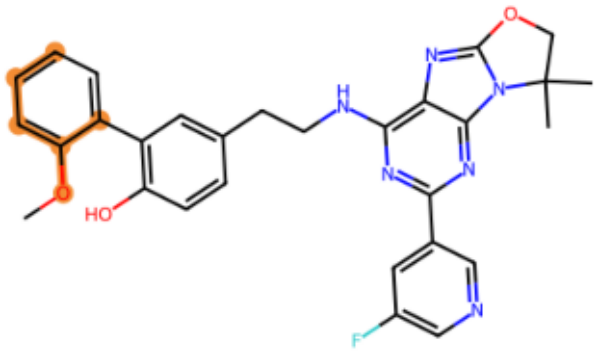


Morgan_1302 | f1=0.020, f0=0.005

ex1

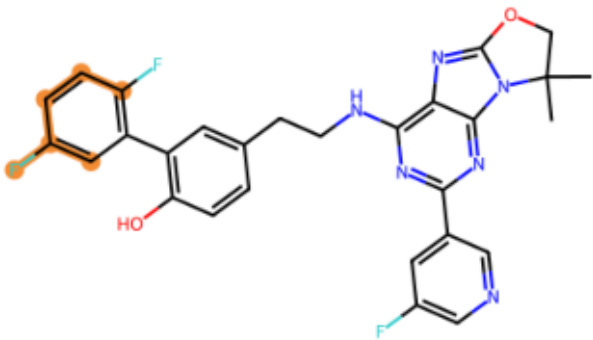


ex2

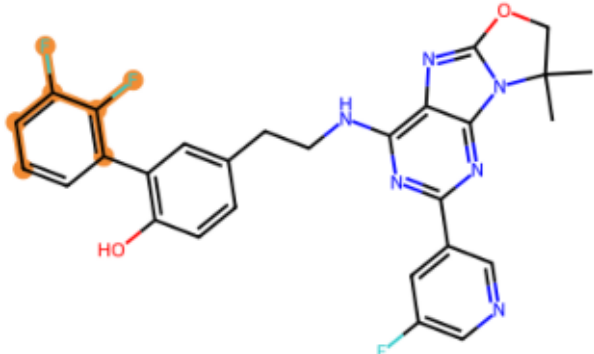


Morgan_1411 | f1=0.037, f0=0.019

ex1

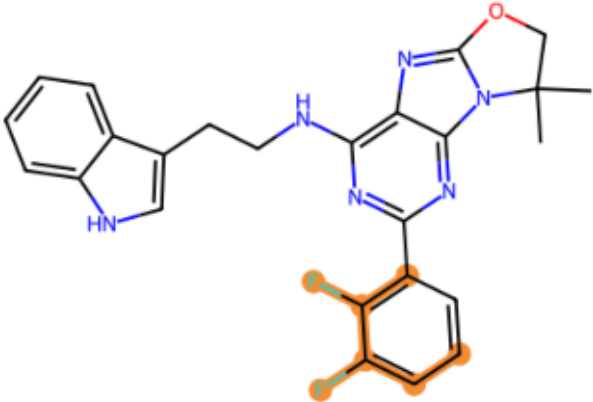


ex2

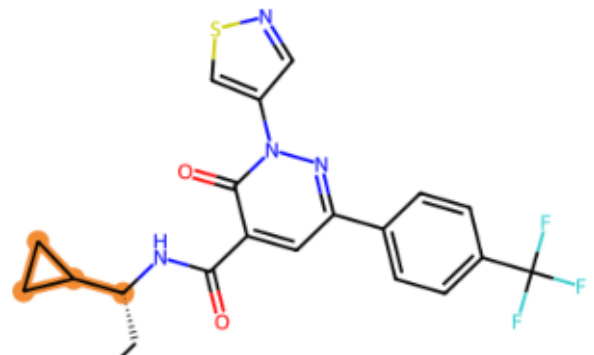


Morgan_1421 | f1=0.033, f0=0.019

ex1

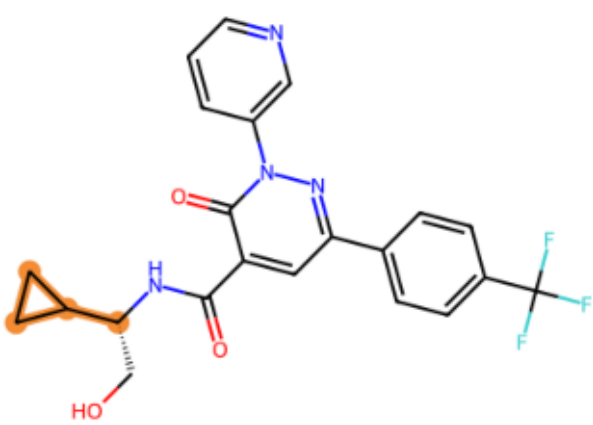


ex2

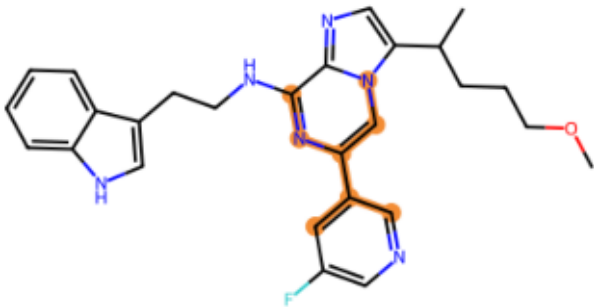


Morgan_1424 | f1=0.026, f0=0.010

ex1

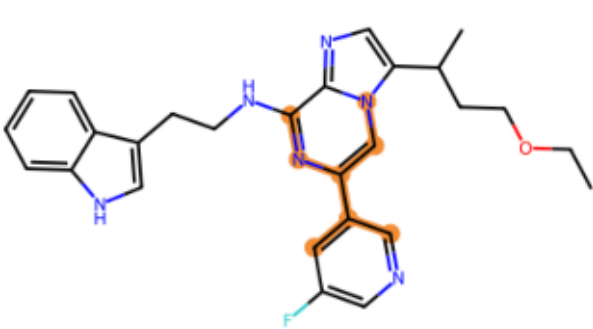


ex2



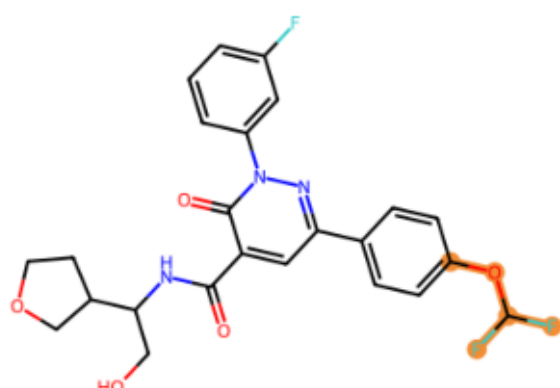
Morgan_1445 | f1=0.020, f0=0.015

ex1



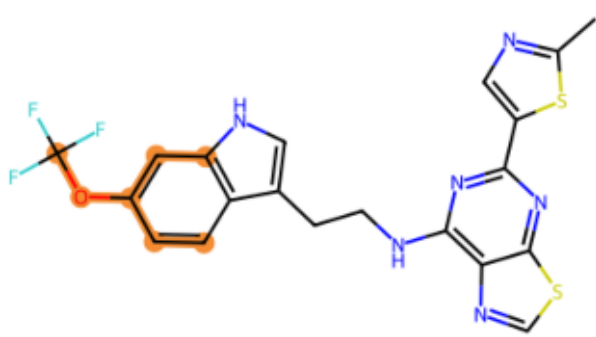
ex2

Only-active Morgan bits (highlighted Morgan bit environments)
Threshold $\geq 2\%$, Morgan radius=2, nBits=2048 — page 2/6

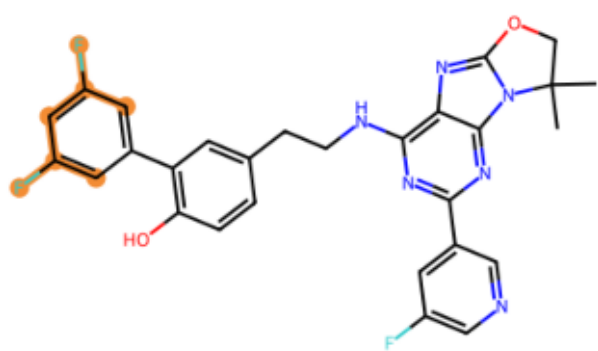


Morgan_1457 | f1=0.030, f0=0.010

ex1

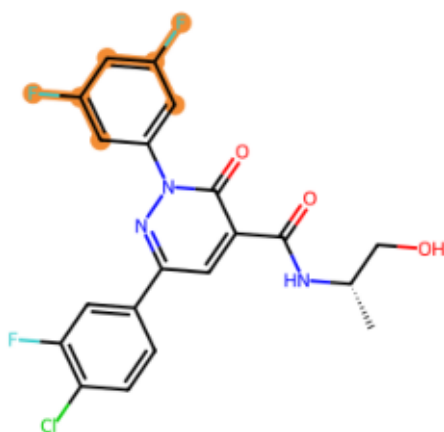


ex2

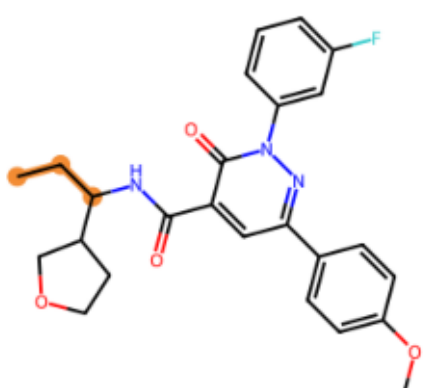


Morgan_1541 | f1=0.024, f0=0.015

ex1

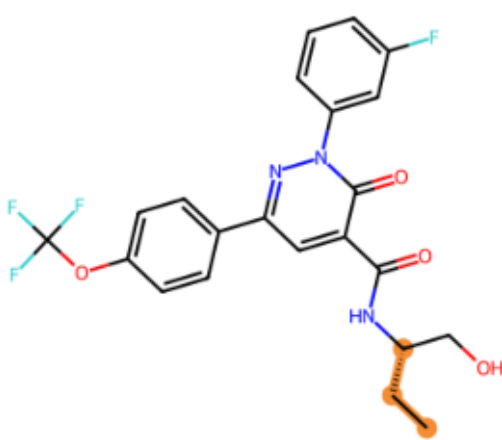


ex2

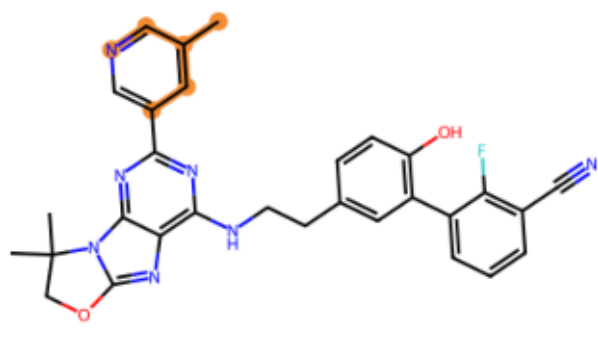


Morgan_1545 | f1=0.022, f0=0.010

ex1

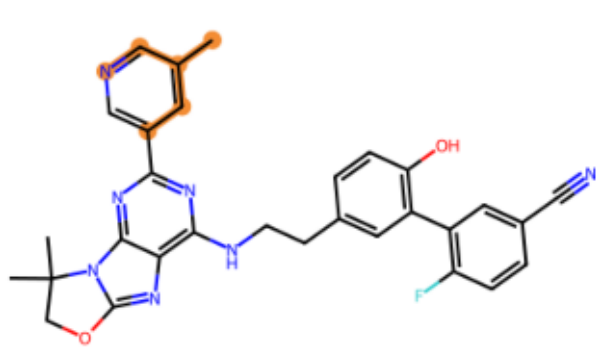


ex2

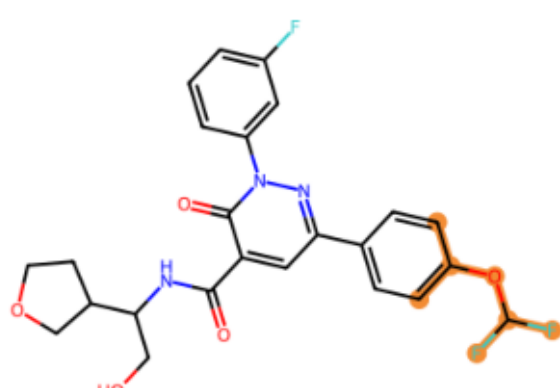


Morgan_1614 | f1=0.022, f0=0.010

ex1

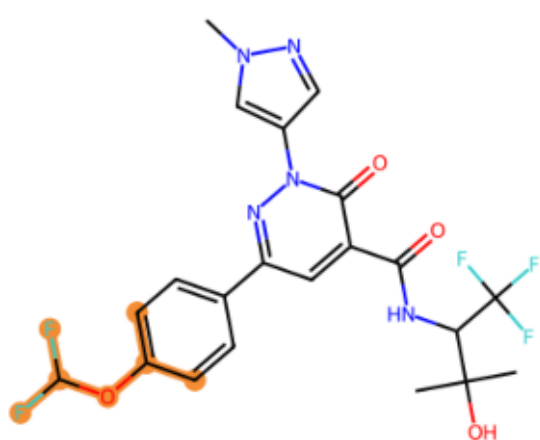


ex2

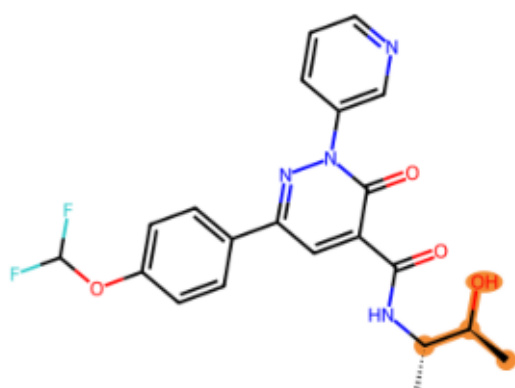


Morgan_1667 | f1=0.028, f0=0.005

ex1

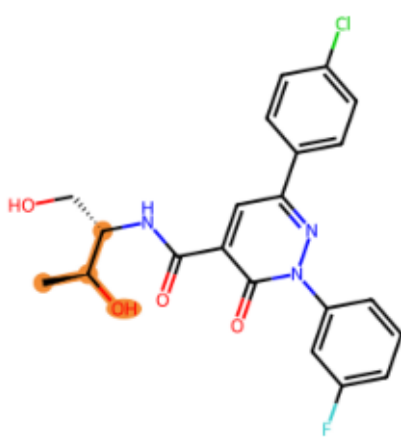


ex2



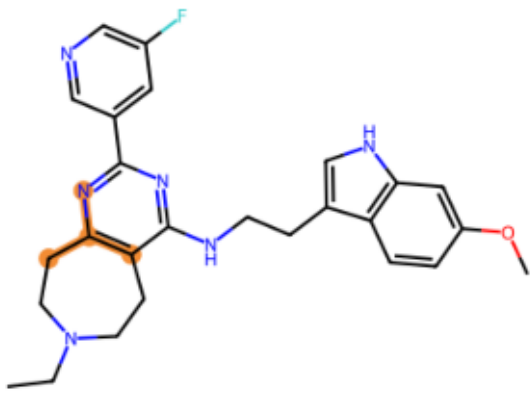
Morgan_1694 | f1=0.030, f0=0.005

ex1



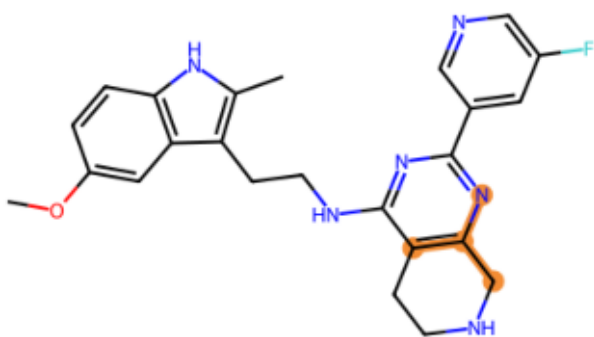
ex2

Only-active Morgan bits (highlighted Morgan bit environments)
Threshold $\geq 2\%$, Morgan radius=2, nBits=2048 — page 3/6

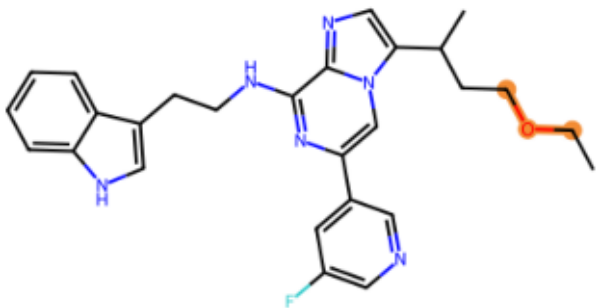


Morgan_1949 | f1=0.024, f0=0.019

ex1

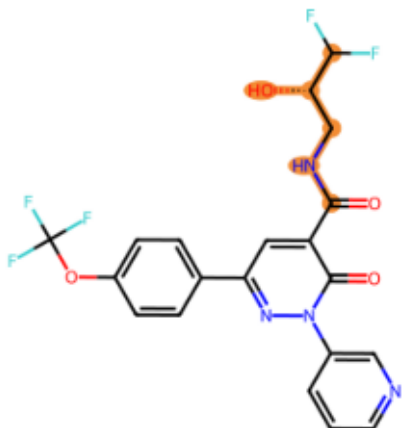


ex2

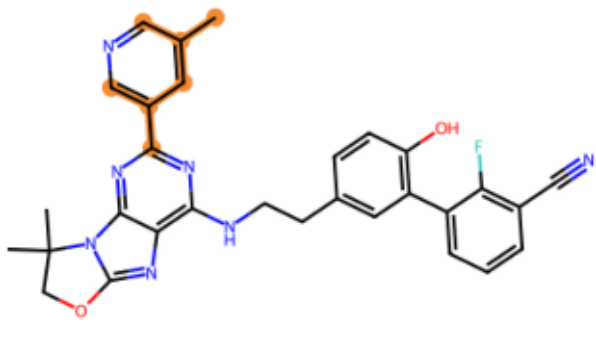


Morgan_1993 | f1=0.020, f0=0.019

ex1

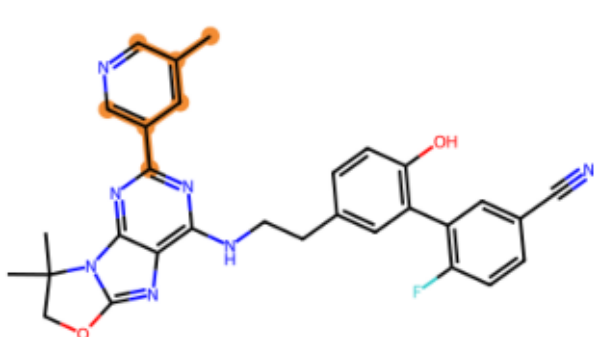


ex2

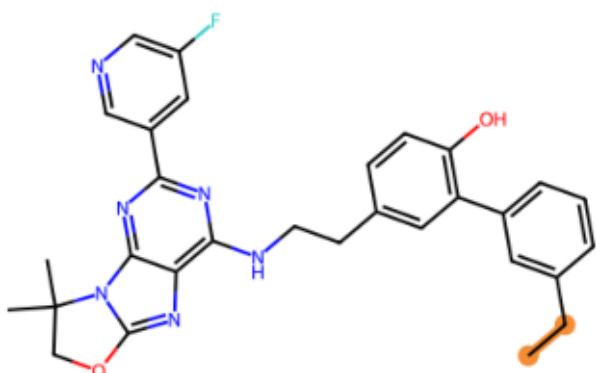


Morgan_237 | f1=0.026, f0=0.019

ex1

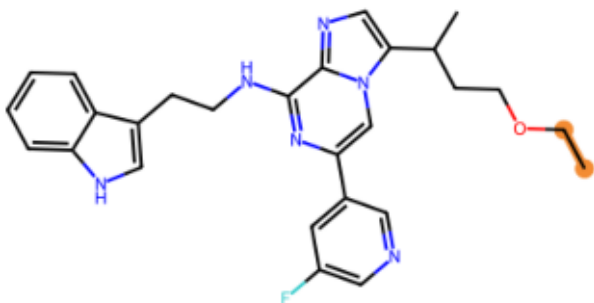


ex2

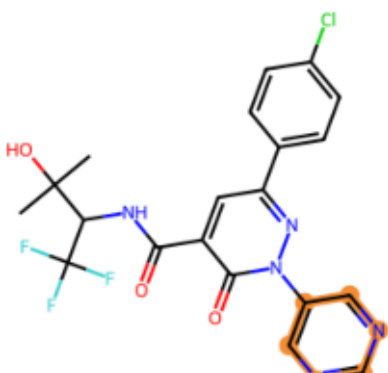


Morgan_295 | f1=0.028, f0=0.010

ex1

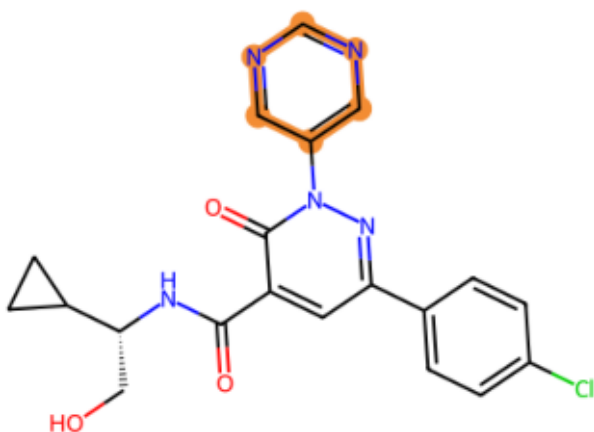


ex2

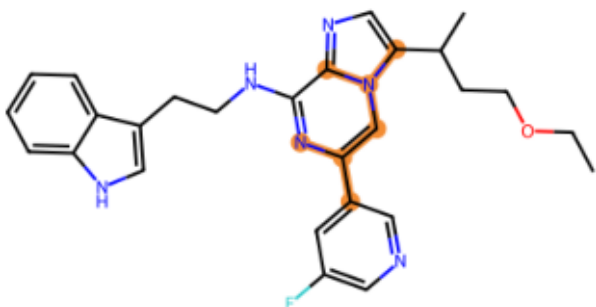


Morgan_303 | f1=0.020, f0=0.005

ex1

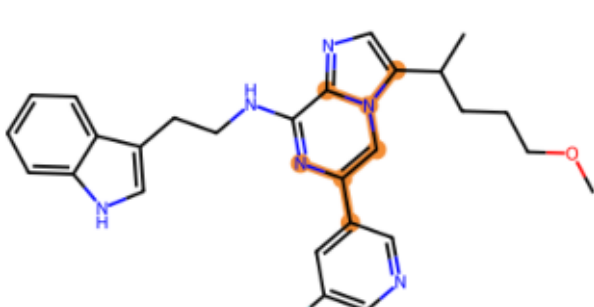


ex2



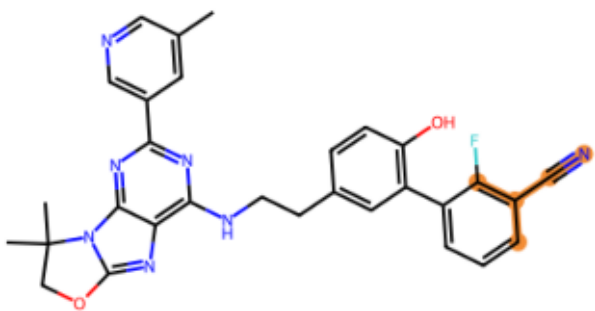
Morgan_349 | f1=0.033, f0=0.015

ex1



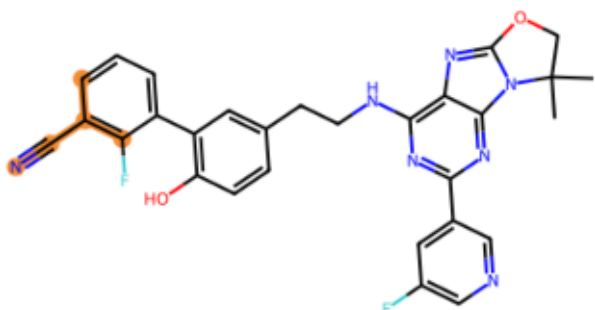
ex2

Only-active Morgan bits (highlighted Morgan bit environments)
Threshold $\geq 2\%$, Morgan radius=2, nBits=2048 — page 4/6

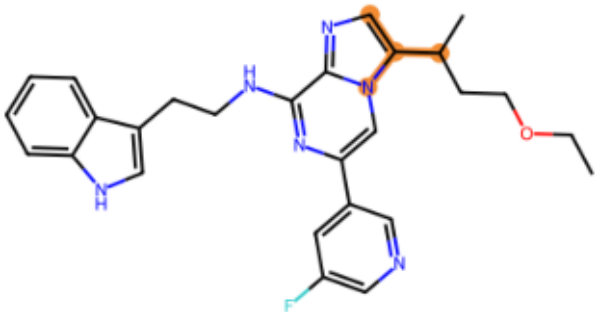


Morgan_362 | f1=0.026, f0=0.015

ex1

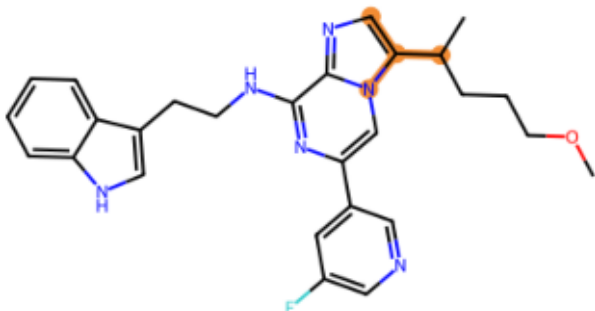


ex2

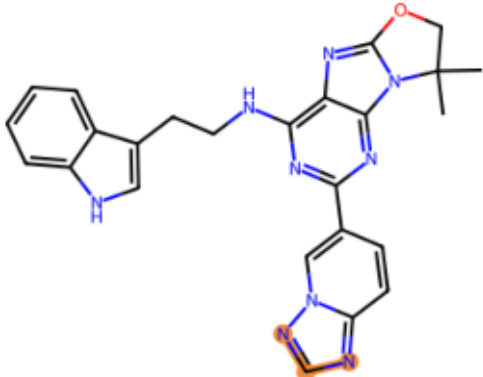


Morgan_390 | f1=0.043, f0=0.010

ex1

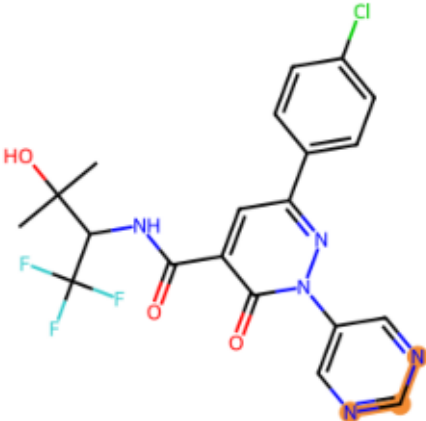


ex2

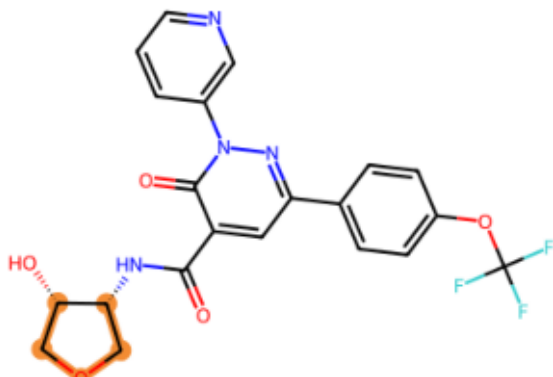


Morgan_490 | f1=0.022, f0=0.005

ex1

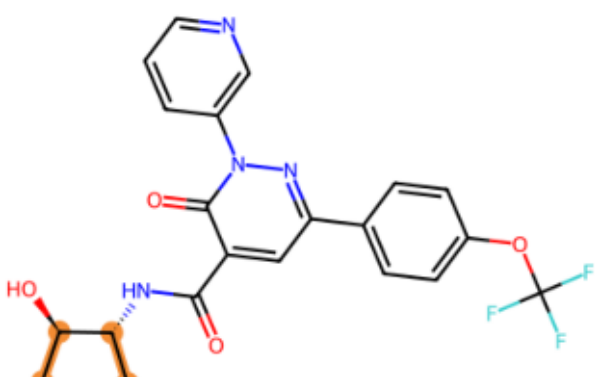


ex2

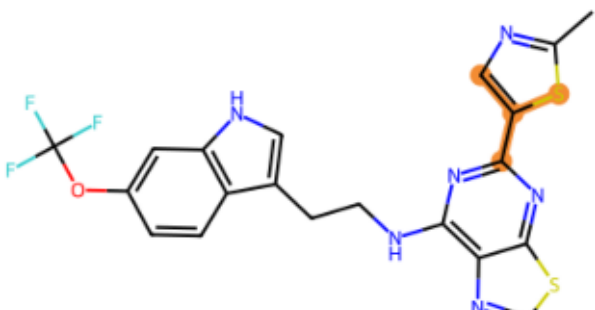


Morgan_612 | f1=0.030, f0=0.019

ex1

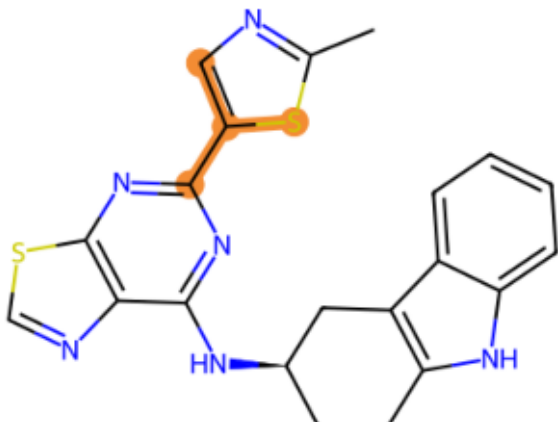


ex2

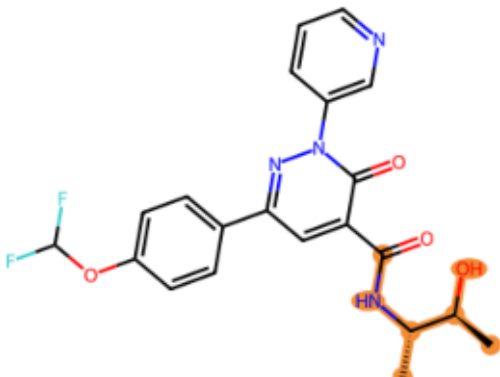


Morgan_63 | f1=0.020, f0=0.010

ex1

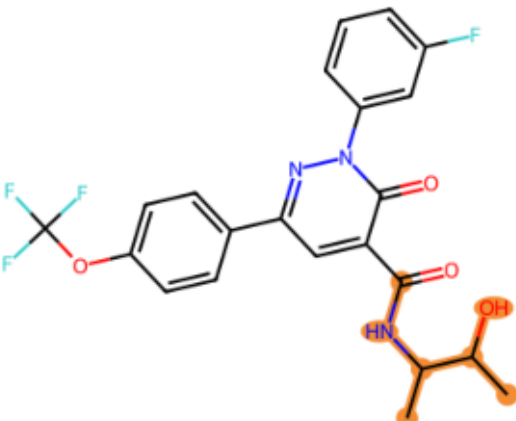


ex2



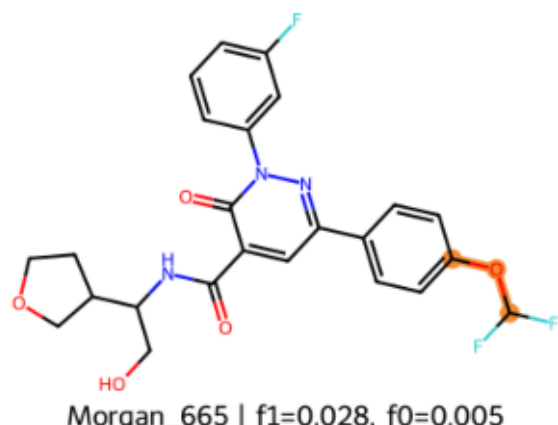
Morgan_644 | f1=0.026, f0=0.005

ex1



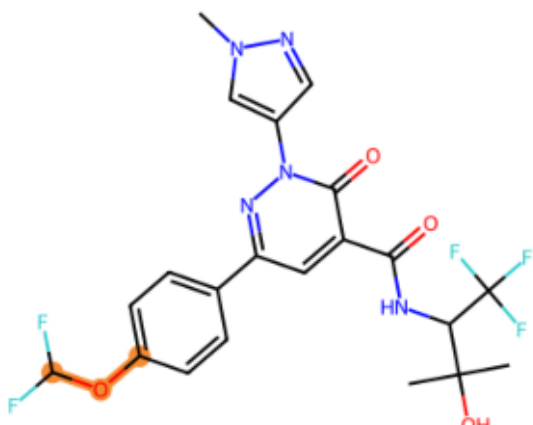
ex2

Only-active Morgan bits (highlighted Morgan bit environments)
Threshold $\geq 2\%$, Morgan radius=2, nBits=2048 — page 5/6

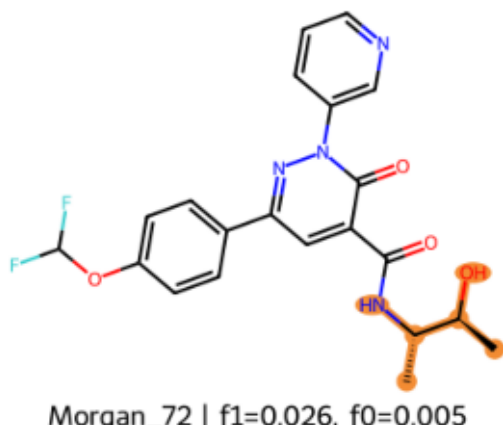


Morgan_665 | f1=0.028, f0=0.005

ex1

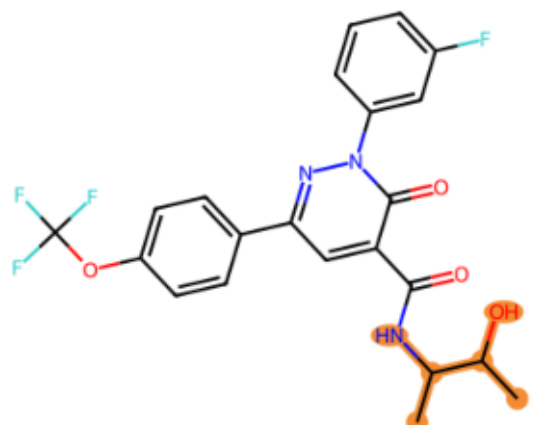


ex2

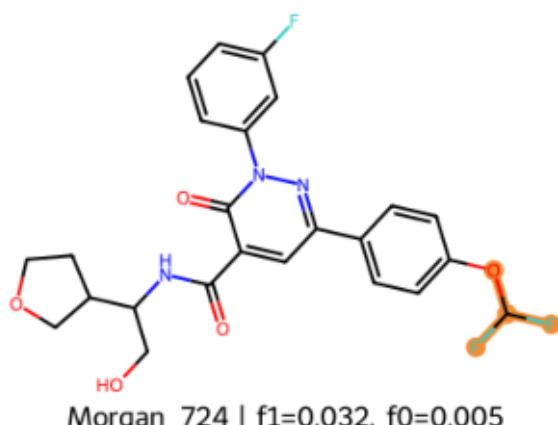


Morgan_72 | f1=0.026, f0=0.005

ex1

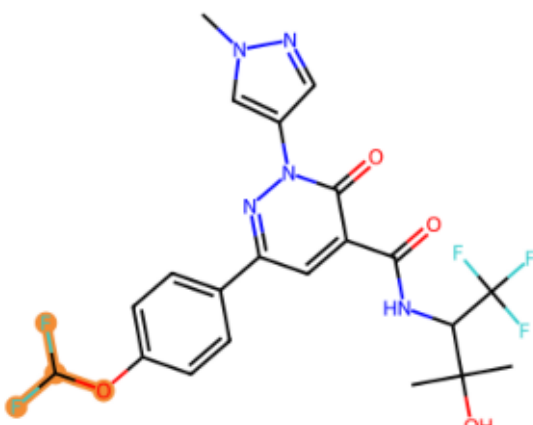


ex2

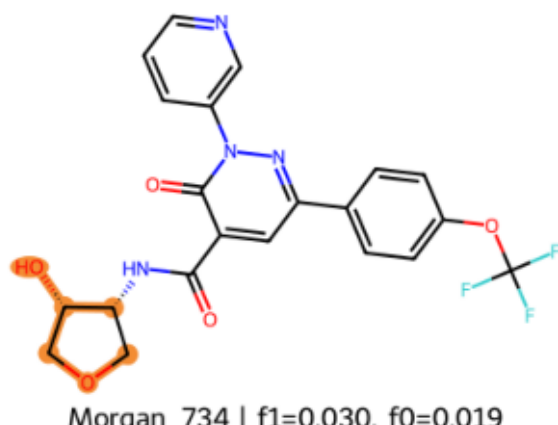


Morgan_724 | f1=0.032, f0=0.005

ex1

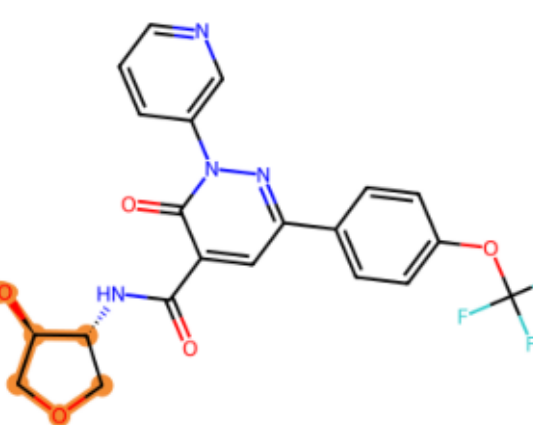


ex2

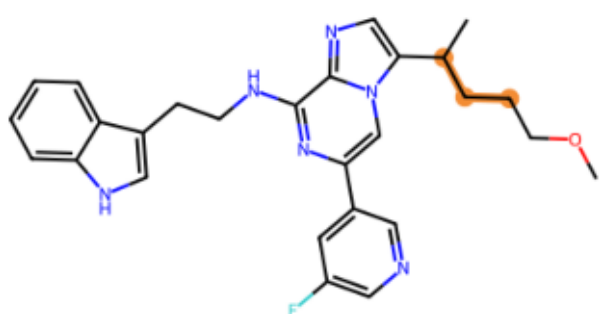


Morgan_734 | f1=0.030, f0=0.019

ex1

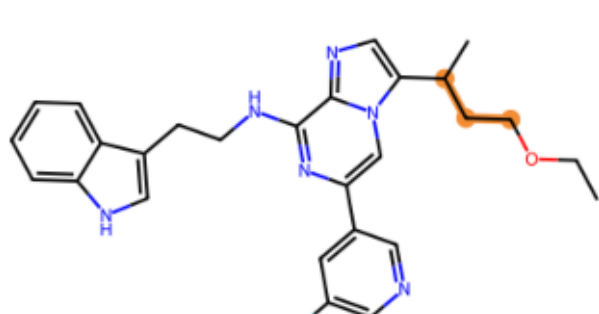


ex2

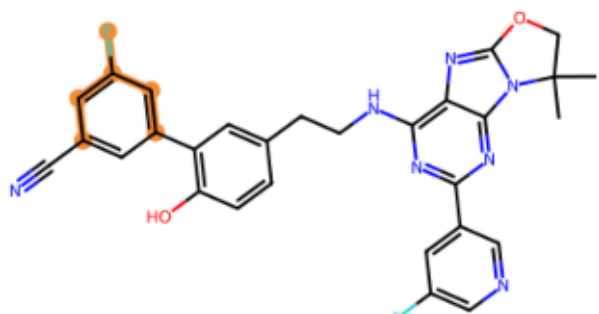


Morgan_740 | f1=0.022, f0=0.015

ex1

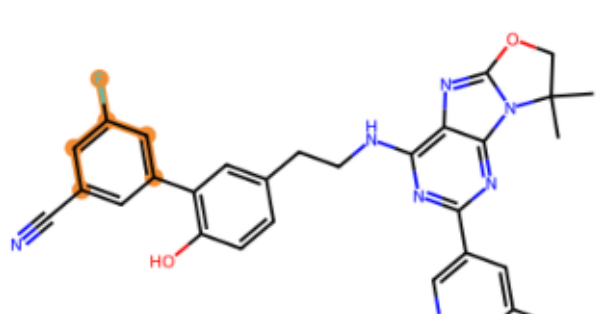


ex2

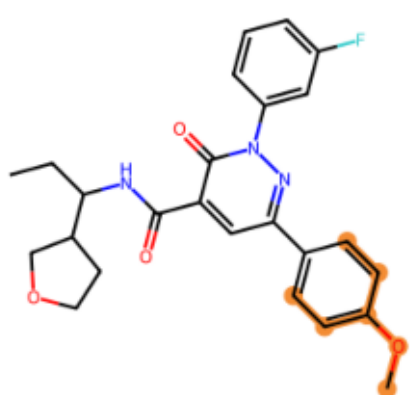


Morgan_768 | f1=0.028, f0=0.015

ex1

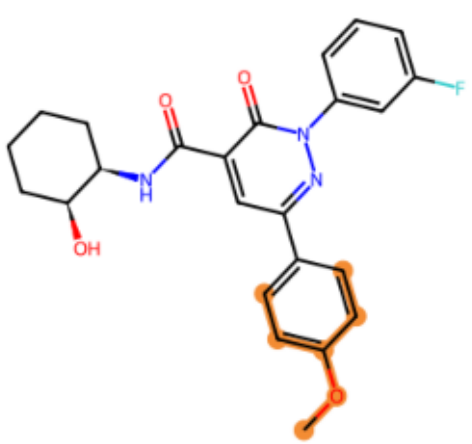


ex2

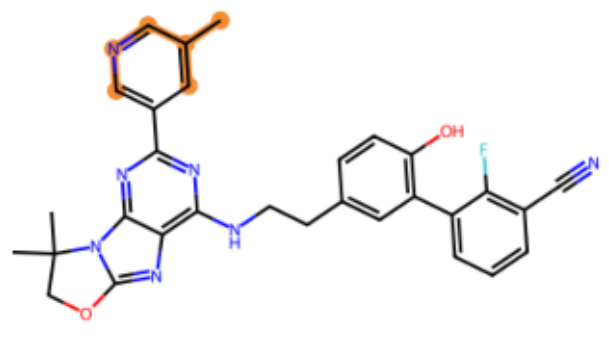


Morgan_832 | f1=0.020, f0=0.015

ex1

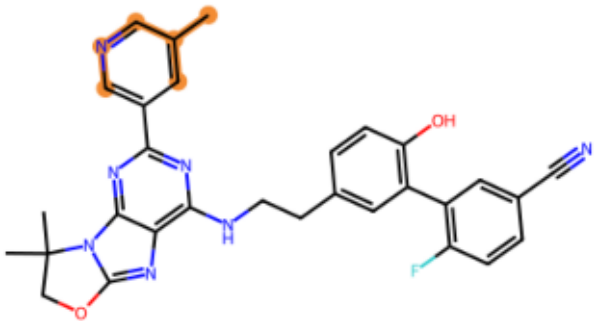


ex2

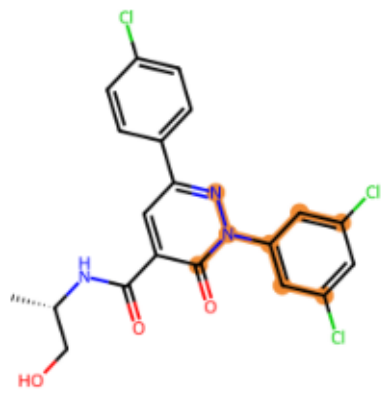


Morgan_841 | f1=0.022, f0=0.010

ex1

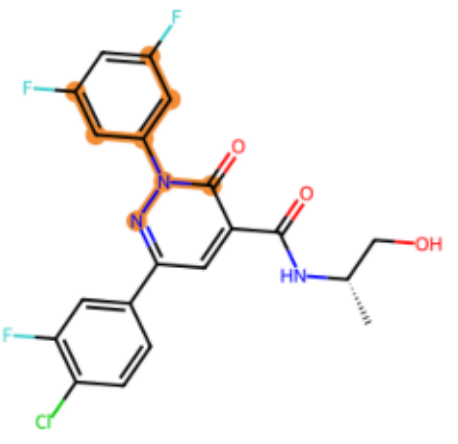


ex2

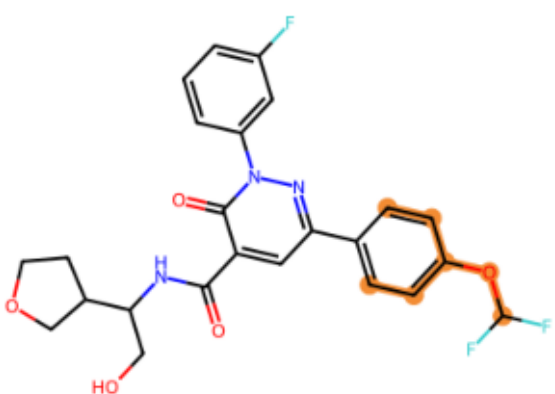


Morgan_898 | f1=0.020, f0=0.019

ex1

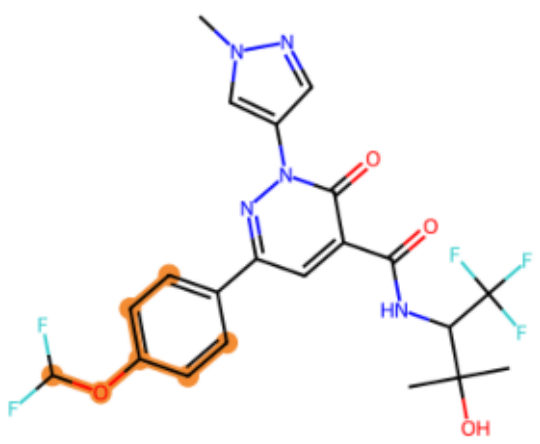


ex2



Morgan_969 | f1=0.028, f0=0.005

ex1



ex2